

## 1. Installation:

### Install Java

Java must be installed on your system before you can run the installer.

This can be downloaded from

<https://www.oracle.com/java/technologies/javase/javase8u211-later-archive-downloads.html>.

Users: Install the Java Runtime Environment (JRE).

Developers: Install the Java Development Environment (JDK).

**Note: that Java version 1.8.0\_231 is required.**

## 2. Setup:

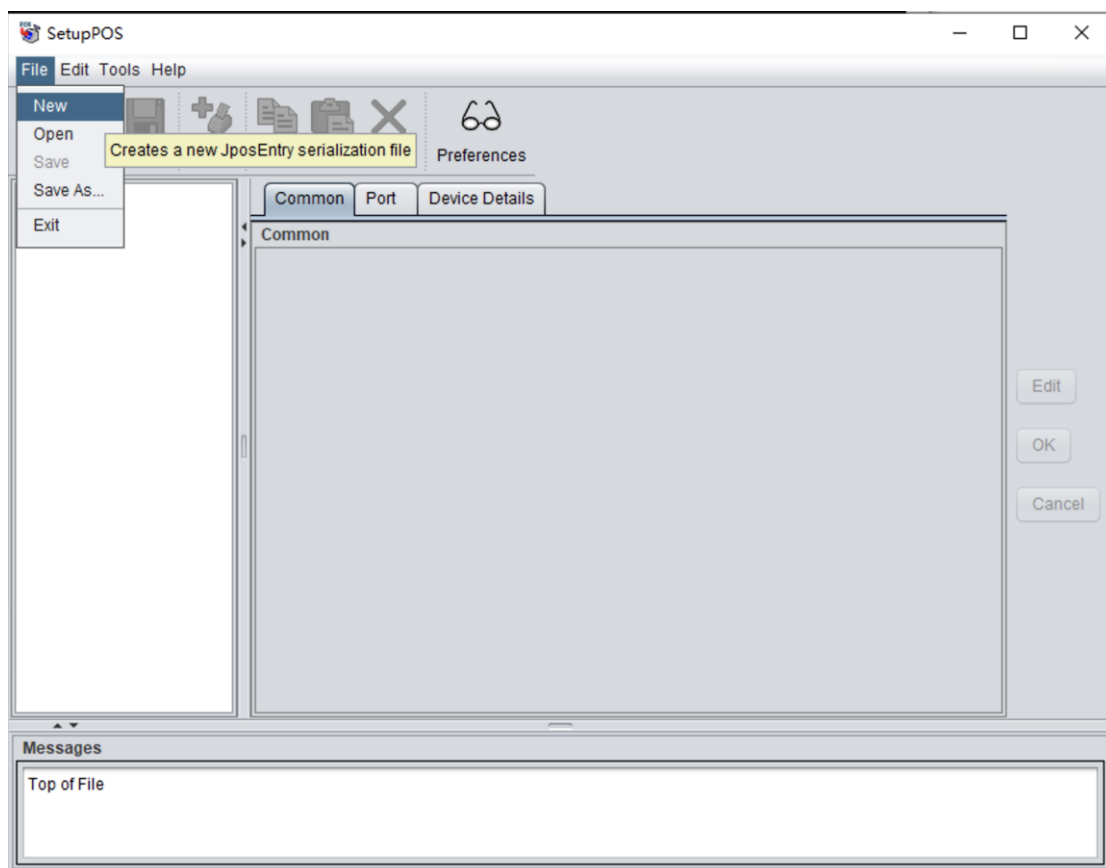
Type the following at the terminal to change to you home directory:

```
JavaPOS_ADK_1141_for_Linux_x64
```

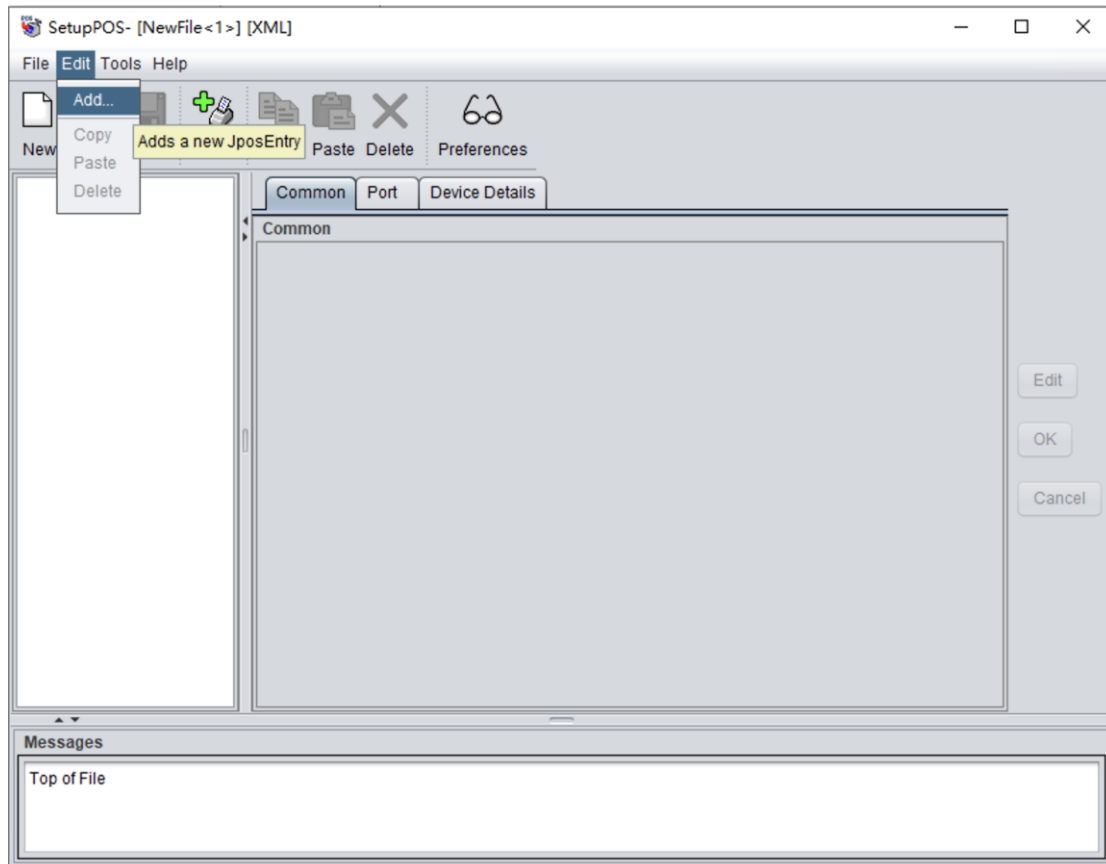
Execute the SetupPOS:

```
SetupPOS.bat
```

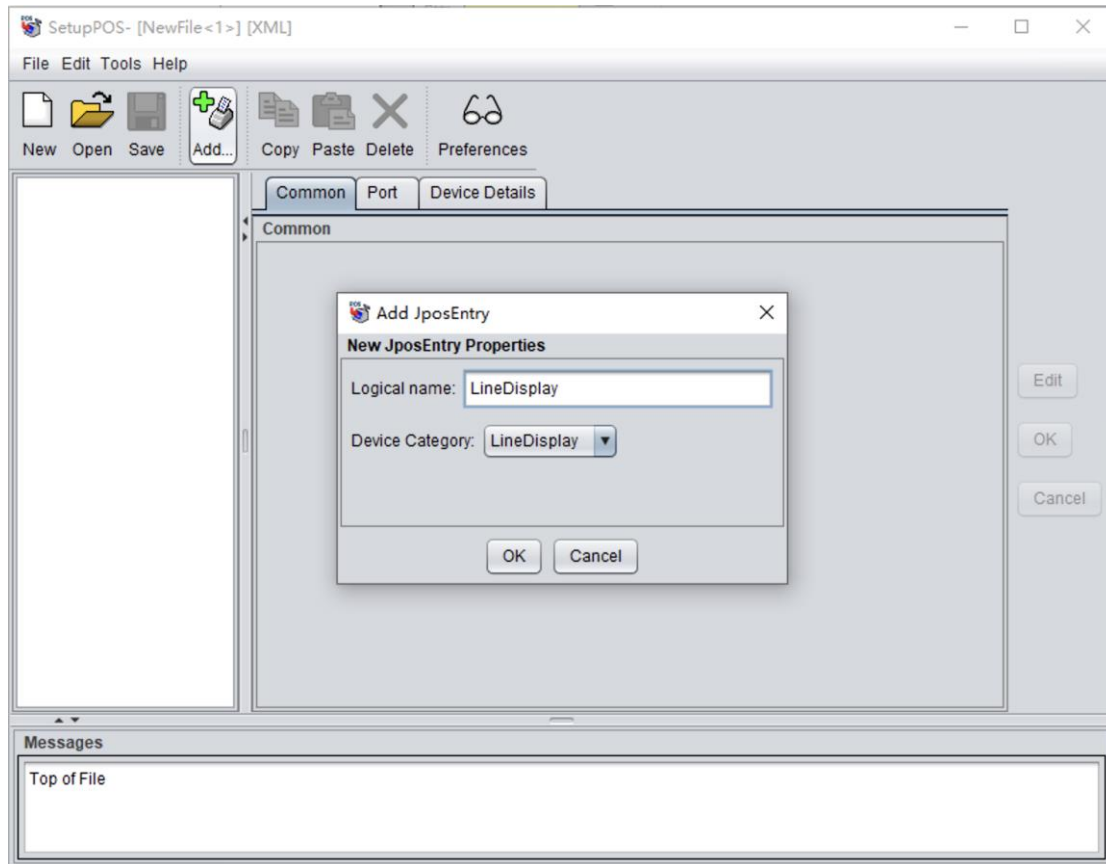
### Step 1: File -> New



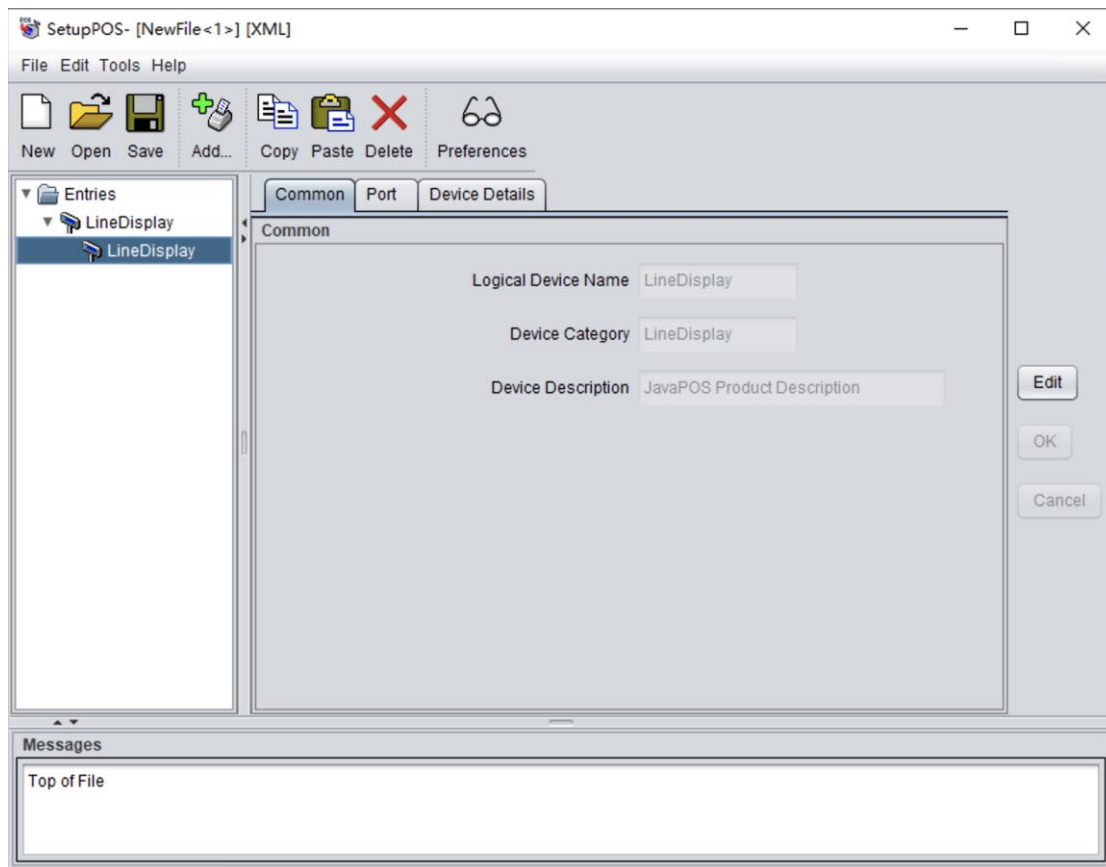
## Setp 2: Edit -> Add



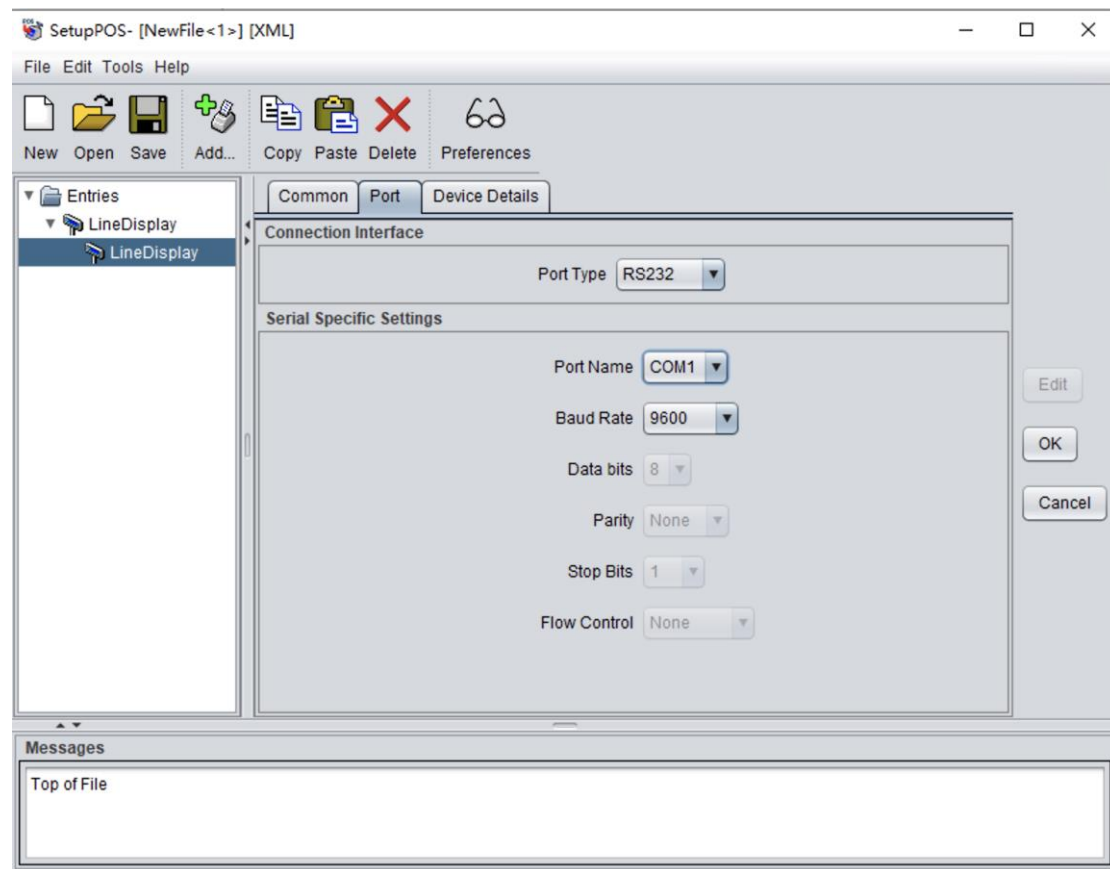
**Step 3: select “Device Category” -> “LineDisplay” -> “OK”**



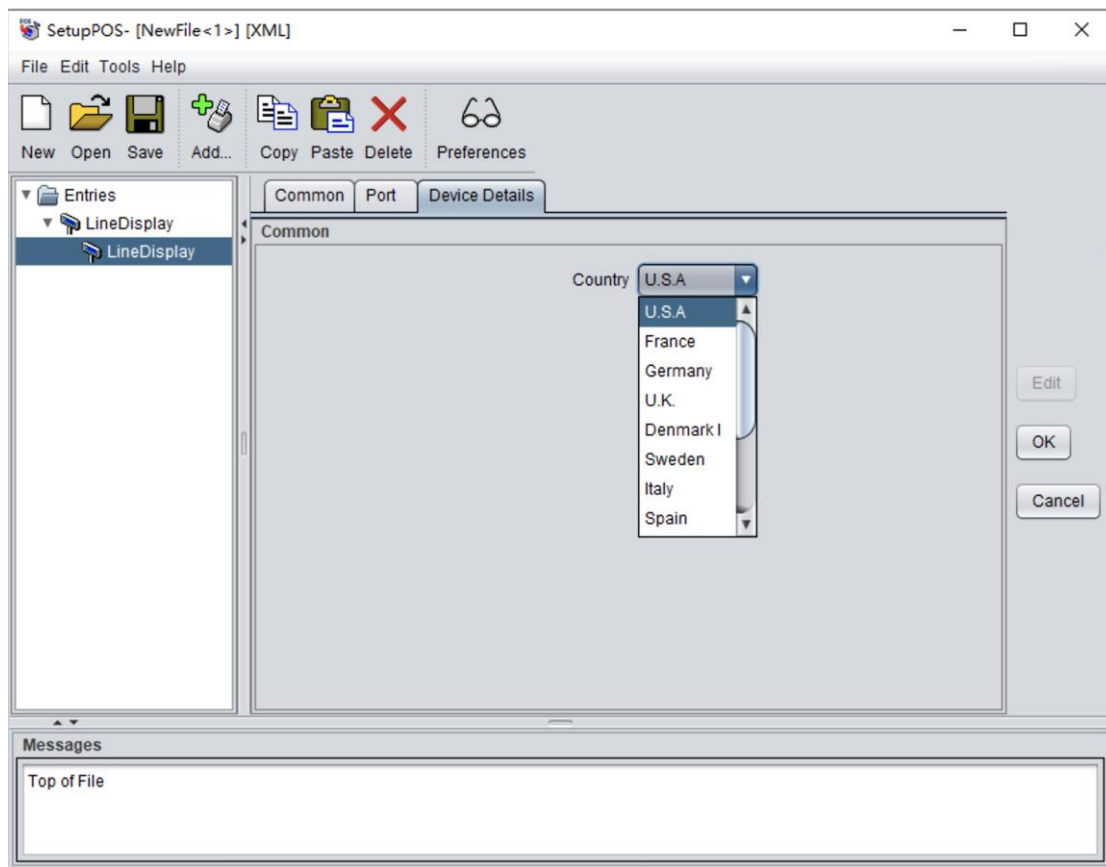
## Step 4: Modify common information: “Edit” -> “OK”



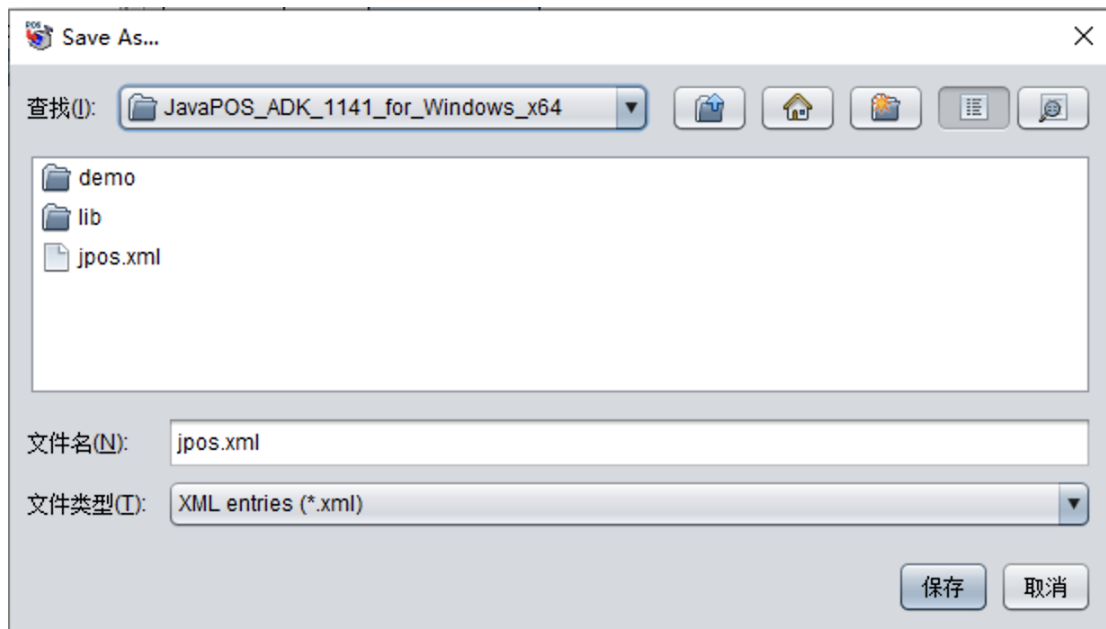
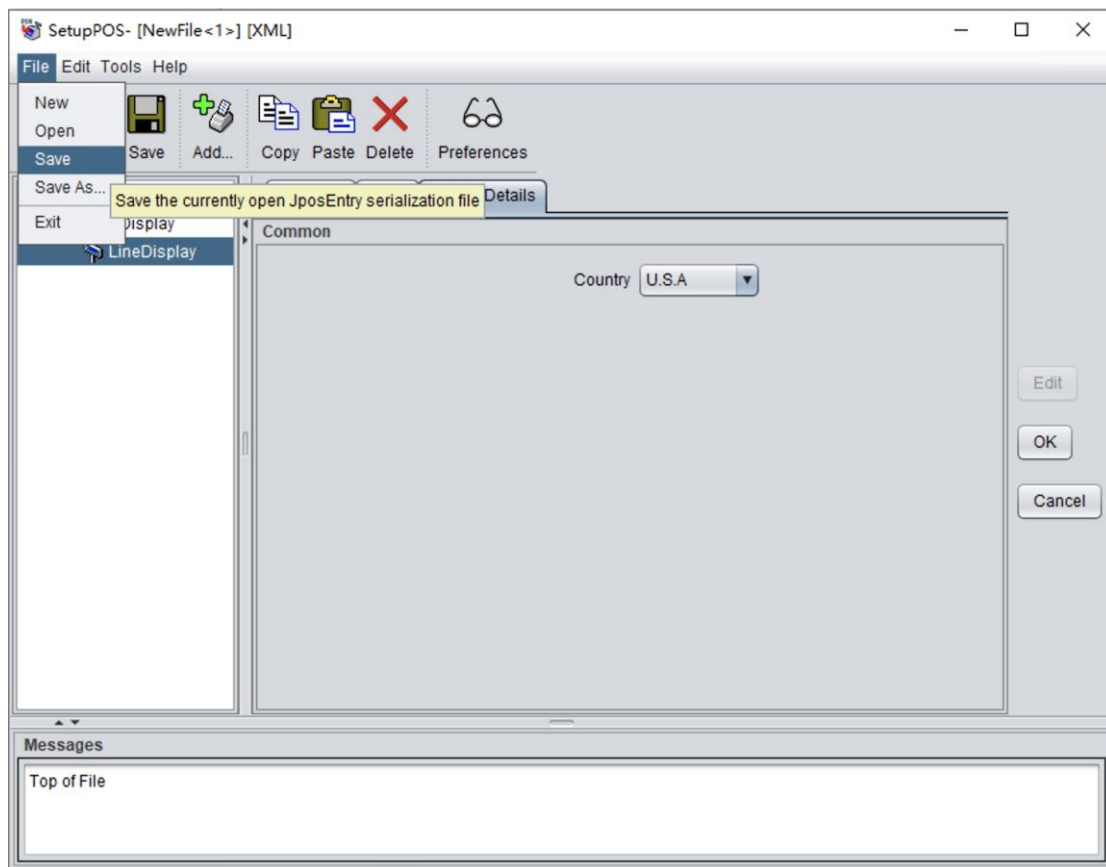
## Step 5: Modify port information



## Step 6: Modify country



## Step 7: Save the setup file



**Note:** Must be saved to the current directory, filename "jpos.xml"



## Step 8: CheckHealth

Execute the CheckHealth:

CheckHealth.bat

